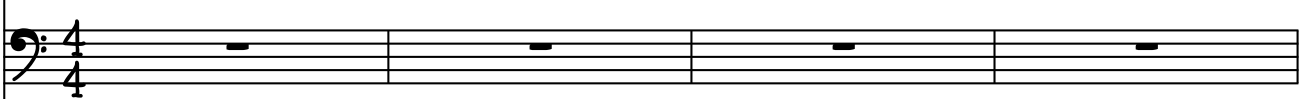


# 다시,여름방학

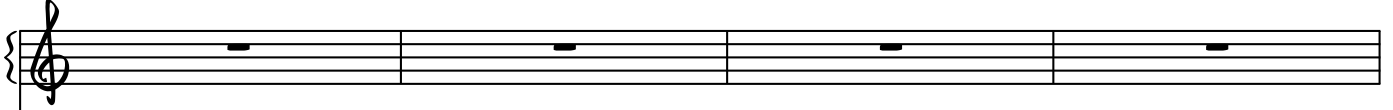
♩ = 100



♩ = 100



5



F G Am C

F G Am C F

그 래 우 리 - 가 기 - 다 린 - 방 학 은 아 - 니 었 - 었 지 설 레 던 너

G C Am F

- 의 마 - 음 도 - 파 도 처 - 럼 - 하 알 게 부 서 졌 어 내 게 익 숙 한

22

햇살 바람따라서 너와함께한 모래위를 걸어봤어 수평선에 닿

26

을 것 같았던 우리의 꿈 이젠 보이지 않아 하지만 다시 꿈꾸

30

고 싶어 - 내가 미안해 용서해

33

떠 들어 - 봐 도 - 이 미 지 나 간 계 절 은 대 답 하 지 - 알 - 아 너 와

36

함 께 한 추 억 에 갇 혀 버 려 - 서 - 다 시 돌 아 올 여 름 은 - 나 에 겐

39

없 을 테 니 - 까 -

43

C C D/C Fm/C C

48

Am Em F G C G/B

불 게 노 을 진 구 름 하 ㄴ 늘 아 래 서 길 어 진 저 녁 그 림 자 ㄴ 를 따 라 갔 어

52

Am Em F Dm7 Em7

그 곳 엔 믿 을 수 없 이 ㄴ 반 짝 이 던 ㄴ 네 모 습 날 반 겨 주 며

56

56

웃 어 주 었 어 나 의 눈 동 자 속 에 네

Chords:  $Fm^7$ ,  $G$ ,  $A^{maj7}$ ,  $A$ ,  $C^\sharp$

59

59

가 들 어 - 있 - 어 - - 나 의 눈 물 이 눈 물 이 - 널 닦 아 내 - 려 - 도 - - 정 말

Chords:  $F^\sharp m$ ,  $E m^7$ ,  $A^7$ ,  $D^{maj7}$ ,  $A$ ,  $B^7$ ,  $E$

62

62

소 중 히 소 중 히 간 직 했 - 던 - 말 - - 다 시 돌 아 온 너 에 게 - 살 며 시

Chords:  $A$ ,  $C^\sharp$ ,  $F^\sharp m$ ,  $E m^7$ ,  $A^7$ ,  $D^{maj7}$ ,  $A$

65

8<sup>va</sup>-

속삭일거야 어른이 되어도 변치말아줘 시간

68

8<sup>va</sup>-

이 지나도 그럴 게 맑게 웃어줘 우리가 써 내려갈 추

71

8<sup>va</sup>-

억의 낙서는 다쳐 돌아올겨울도 따뜻하게 만들거야

74

The bass line is written on a single staff in bass clef with a key signature of two flats (Bb and Eb). It consists of the following notes: G2 (half note), Bb2 (half note), Eb3 (half note), G3 (half note), Bb3 (half note), Eb4 (half note), G4 (half note), Bb4 (half note), Eb5 (half note), G5 (half note), Bb5 (half note), and Eb6 (half note).

78

The bass line of 'The Sound of Silence' is shown in the bottom staff. It begins with a Gm7 chord, followed by a Dm chord, and then a series of chords: Eb, Bb, Eb, F, and Bb. The notation includes a treble clef, a key signature of two flats (Bb and Eb), and a 4/4 time signature. The bass line starts with a G4 note, followed by a half note, and then a series of chords: Gm7, Dm, Eb, Bb, Eb, F, and Bb. The notation includes a treble clef, a key signature of two flats (Bb and Eb), and a 4/4 time signature.

86

A musical score for two staves, both in bass clef with a key signature of one flat (B-flat). The top staff contains ten whole rests, and the bottom staff contains ten whole rests.



96

Three staves of music for measures 96-105. The top staff is in treble clef, the middle in bass clef, and the bottom in treble clef. All staves are in B-flat major (two flats) and contain whole rests for each of the ten measures.

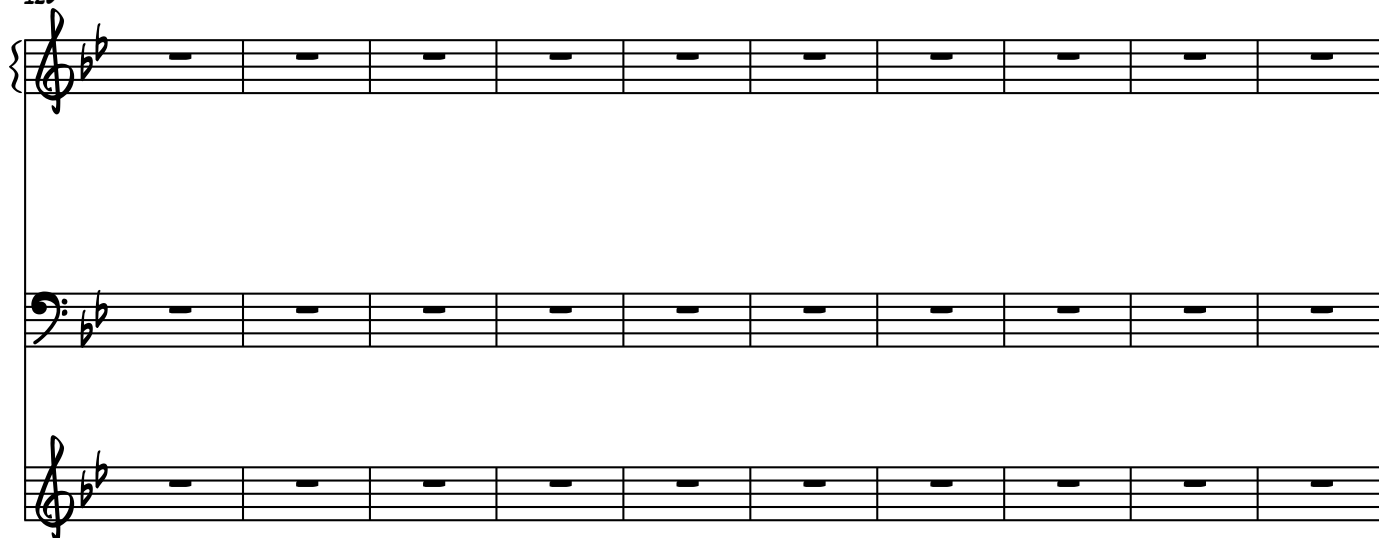
106

Three staves of music for measures 106-115. The top staff is in treble clef, the middle in bass clef, and the bottom in treble clef. All staves are in B-flat major (two flats) and contain whole rests for each of the ten measures.

116

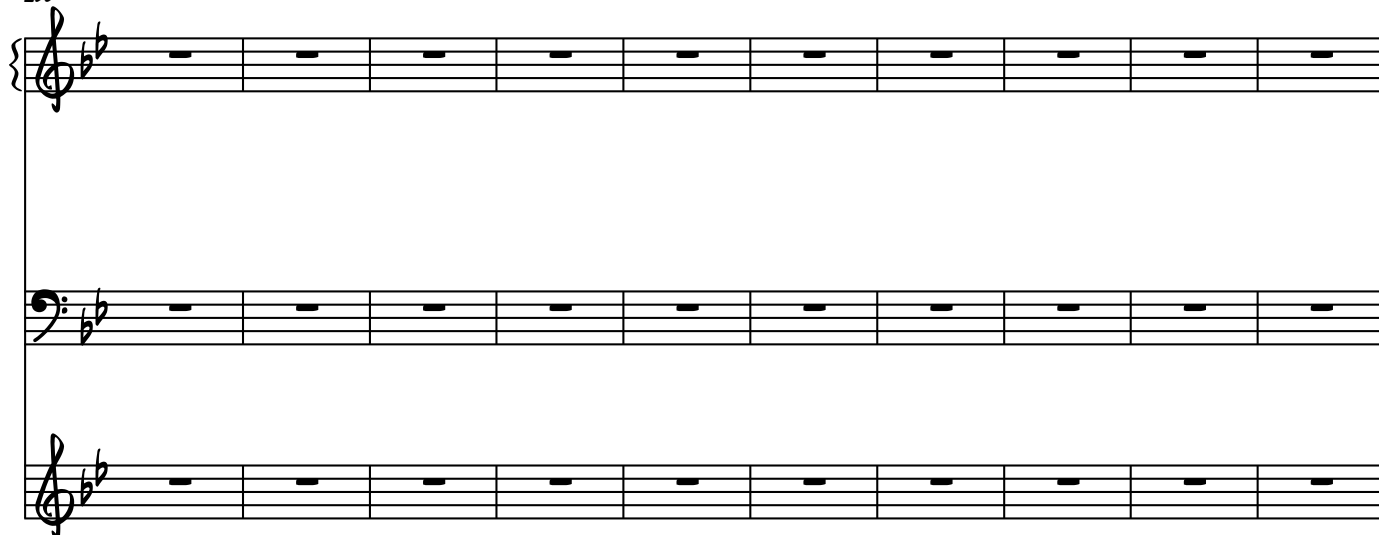
Three staves of music for measures 116-125. The top staff is in treble clef, the middle in bass clef, and the bottom in treble clef. All staves are in B-flat major (two flats) and contain whole rests for each of the ten measures.

126



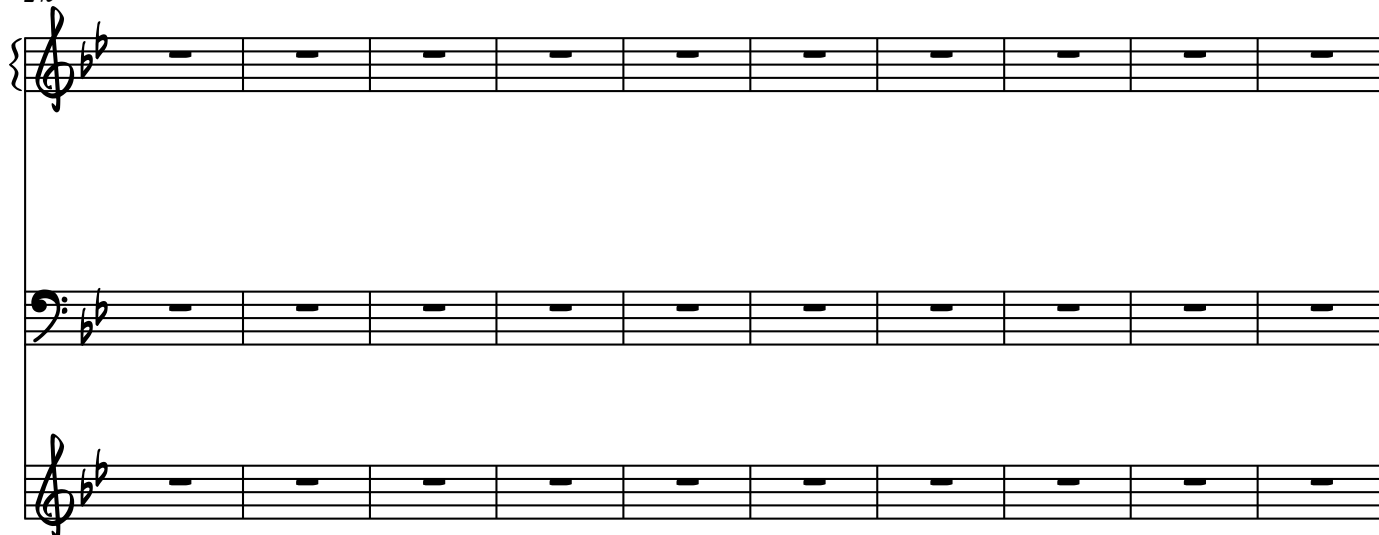
Three staves of music for measures 126-135. The top staff is in treble clef, the middle in bass clef, and the bottom in treble clef. All three staves are in the key of B-flat major (two flats). Each staff contains ten measures, each with a whole rest.

136



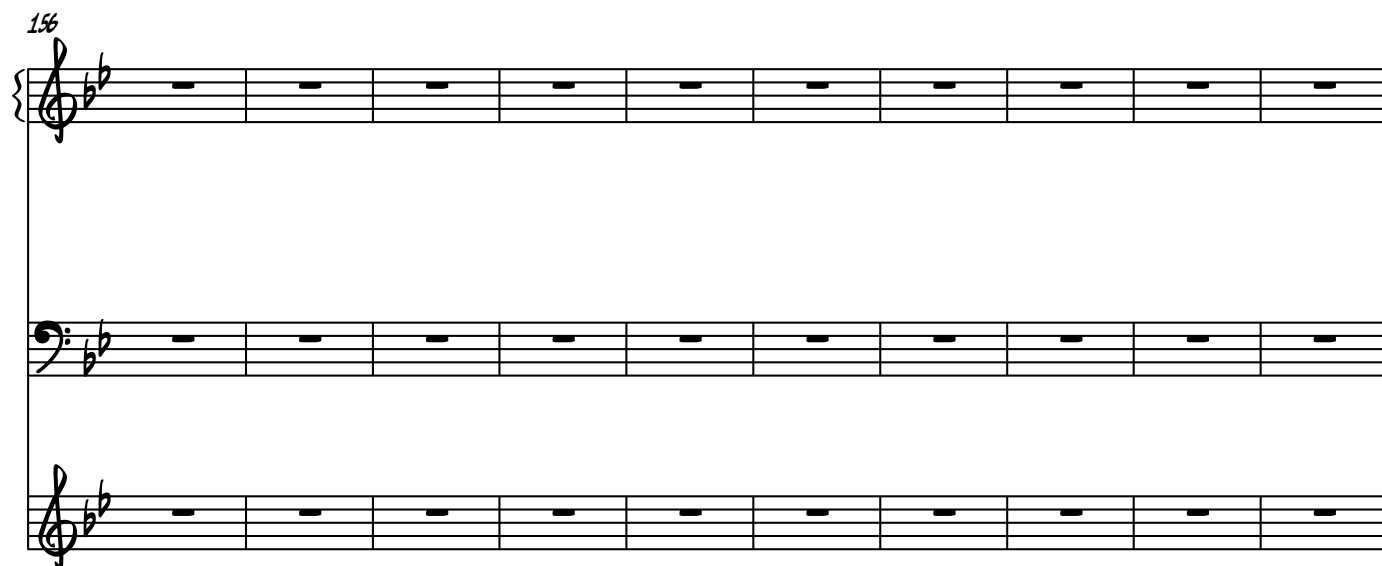
Three staves of music for measures 136-145. The top staff is in treble clef, the middle in bass clef, and the bottom in treble clef. All three staves are in the key of B-flat major (two flats). Each staff contains ten measures, each with a whole rest.

146



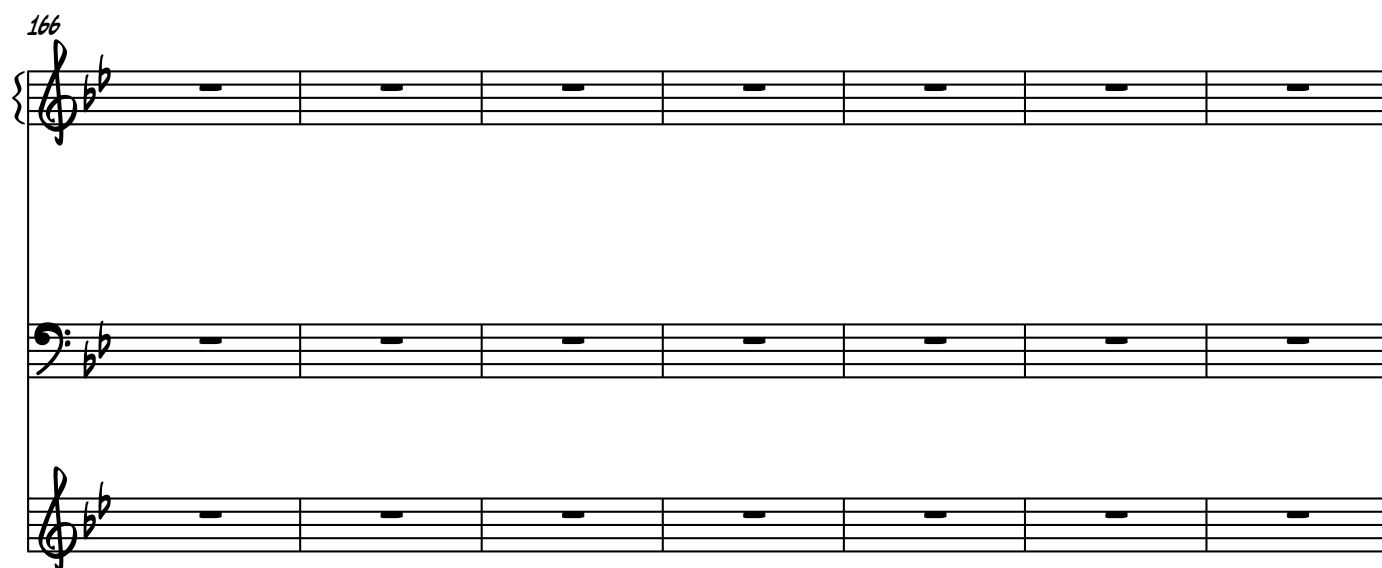
Three staves of music for measures 146-155. The top staff is in treble clef, the middle in bass clef, and the bottom in treble clef. All three staves are in the key of B-flat major (two flats). Each staff contains ten measures, each with a whole rest.

156



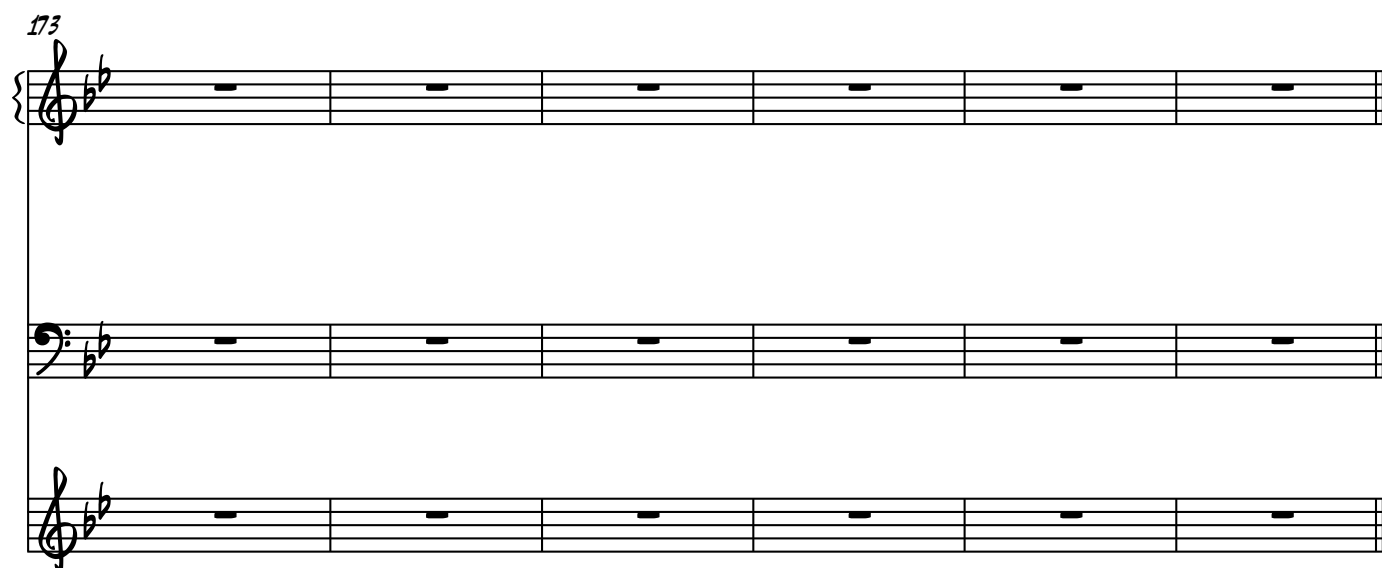
System 156-165: Three staves (treble, bass, treble) in B-flat major. Each staff contains ten measures of whole rests.

166



System 166-172: Three staves (treble, bass, treble) in B-flat major. Each staff contains seven measures of whole rests.

173



System 173-178: Three staves (treble, bass, treble) in B-flat major. Each staff contains six measures of whole rests, ending with a double bar line.